

# The Proteomics Resource Center | The Rockefeller University

## 03/01/23- 01/31/24 (11 months)



8,722 LCMS hours logged (Proteomics: 4,659h / Metabolomics: 4,063h) not including Quality Control and most implementation/tests.



2,195 digestions (charged: 1,192).



304 Proteomics projects (217 internal) and 199 Small Molecule projects (192 internal).



134 individual users (Internal 95/External 39) from 59 different labs (Internal 40/External 19). Walkup instrument usage is not considered.



FY23 subsidy: 20%.  
Projected FY24 subsidy: 34% (based on first 7 months).



Metabolomics samples: 4,157.



Proteomics: median and avg. turn-around time: 13 and 22 days calendar days.

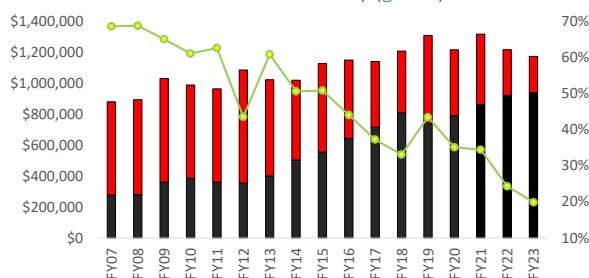


13 letters of support for grants and applications.

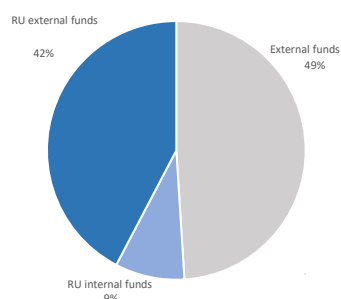


6 co-authored publications and 3 acknowledgements.

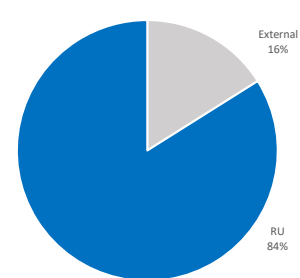
Historical data: Subsidy (red), cost recovery (black) and Percent Subsidy (green)



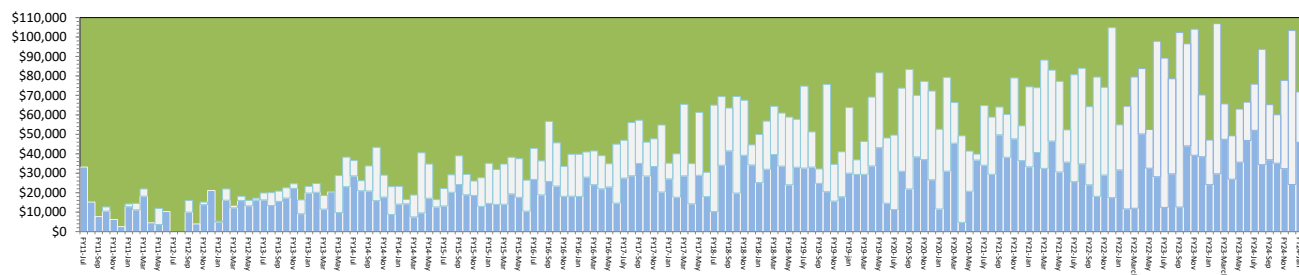
Cost recovery: \$741k (11 months)



6,767 samples (11 months)



Historical monthly cost recovery (blue: internal, grey: external)



The above number are calculated to best of knowledge. Numbers are calculated based on completed projects .