

# The Proteomics Resource Center | The Rockefeller University

## 12/01/17- 08/31/18 (9 months)



6,637 LCMS hours (charged: 4,279 hours) not including Quality Control and implementation/tests.



2,656 digestions (charged: 1,289).



603 Proteomics/Small Molecule projects (Internal: 495/External: 108).  
83 Peptide Projects (Int: 81/Ext: 2) of which 2 were peptide libraries.



188 individual users (Internal 137/External 51) from 78 different labs (Internal 46/External 33). Walkup instrument usages is not included.



35.4% subsidy for FY18.  
Projected FY19 subsidy: <40% (based on 2 months).



37% of all mass spec hours were related to the analysis of small molecules.



Median and average turn-around time;  
Mass Spectrometry: 8/13 days, Peptides: 27/32 days.

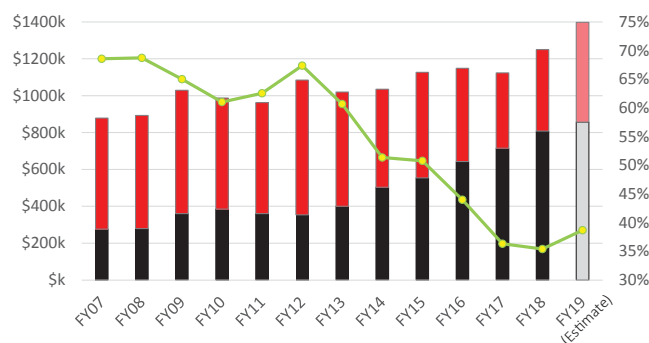


17 letters of support for grants and applications.

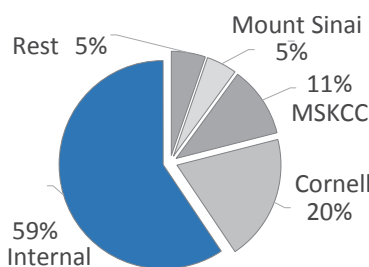


10 co-authored publications and 5 acknowledgments.

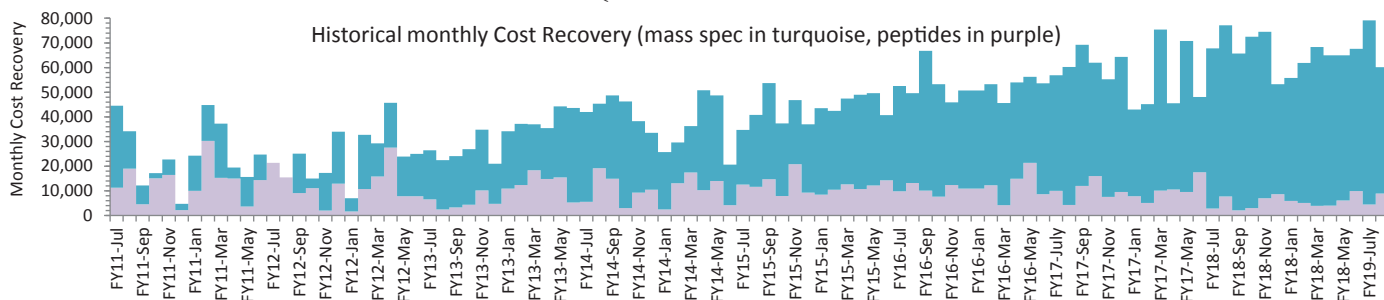
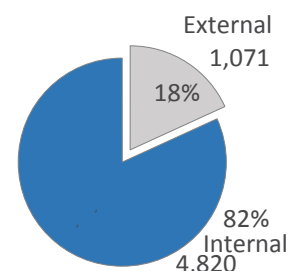
Historical subsidy (red), Cost Recovery (black) and Percent Subsidy (green)



Cost recovery (9 months) \$585,9k



5,891 samples (9 months)



The above number are calculated to the best of my knowledge. Numbers are calculated based on completed projects .