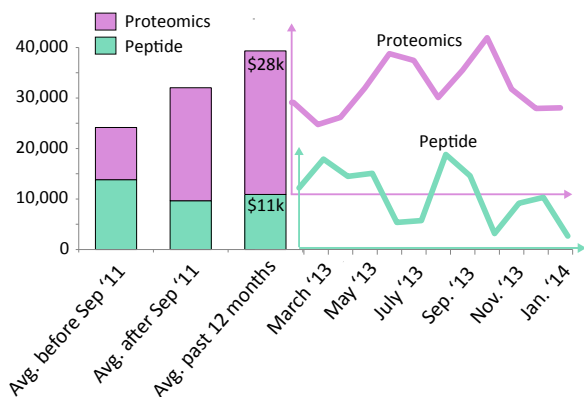


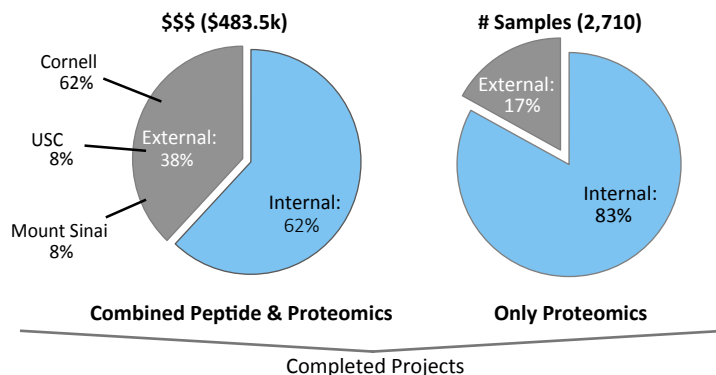
Overview for The Proteomics Resource Center at The Rockefeller University

Period: January 30th 2013 to January 29th 2014.

Monthly User Fees (Received Payments)



Internal vs. External (past 12 months)



5,547 LCMS hours (charged: 3,935 hours) excl. Quality Control and implementation/tests.



1,744 digestions (charged: 1,655).



373 Proteomics Projects (Internal: 274/External: 99) corresponding to 2,710 samples.
171 Peptide Projects (Int: 138/Ext: 33) of which 13 was peptide libraries.



173 individual users (Int: 124/Ext: 49) from 85 different labs (Int. 46/Ext. 39).



Subsidy level for FY13: 60.7% (a record low).
User fee recovery for, the first half of FY14, is 20+ % higher than budgeted.



50% of the projects required some aspects of quantitation.



40% of proteomics projects were based on gel-bands - an intended decrease!



From submission to completion (incl. weekend and holidays).
Peptides: Median of 17 days, Average of 23 days.
Proteomics: Median of 11 days, Average of 18 days.



7 letters of support for grants, support and applications.



The Proteomic Resource Center staff co-authored 7 publications.
Publications where the Center should have been or was acknowledged: ~7.