

The Proteomics Resource Center | The Rockefeller University

01/26/17- 11/30/17 (~10 months)



5,902 LCMS hours (charged: 4,572 hours) not including Quality Control and implementation/tests.



2,557 digestions (charged: 1,363).



529 Proteomics/Small Molecule projects (Internal: 409/External: 120).
81 Peptide Projects (Int: 71/Ext: 10) of which 3 were peptide libraries.



191 individual users (Internal 126/External 65) from
81 different labs (Internal 45/External 36). Walkup instrument users not included.



36.3% subsidy for FY17.
Projected FY18 subsidy: <40% (based on 5 months)



22% of all mass spec hours were related to the analysis of small molecules.



Median and average turn-around time;
Proteomics: 8/13 days, Peptides: 41/45 days.

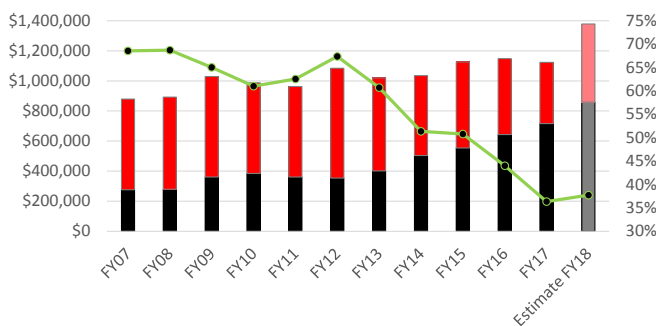


17 letters of support for grants and applications.

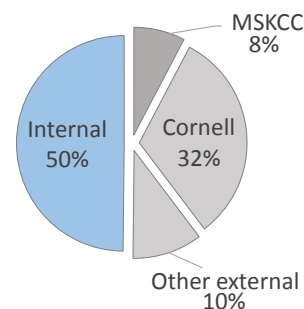


12 co-authored publications and 6 acknowledgments.

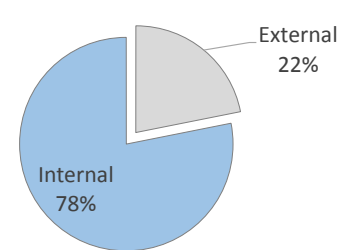
Historical subsidy (red), User fees (black) and Percent Subsidy (green)



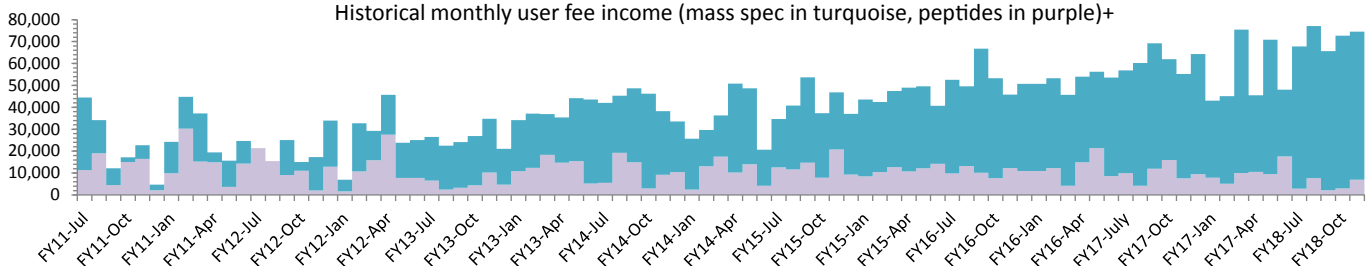
User fee (~10months) \$636k



3,735 samples (~10 months)



Historical monthly user fee income (mass spec in turquoise, peptides in purple)+



The above number are calculated to the best of my knowledge. Numbers are calculated based on completed projects .