

# BenchMarks

THE COMMUNITY NEWSLETTER OF THE ROCKEFELLER UNIVERSITY

FRIDAY, DECEMBER 9, 2005

## Announcements

**Holiday party is December 22.** This year's holiday party will be themed "Fire and Ice," featuring spicy appetizers and icy white desserts. As was the case last year, the party will begin at 4 p.m. and go to 7:30. Music in



Weiss café will be latin jazz; blues will be on the 17th floor. The party is December 22 and is open to all Rockefeller staff, students, postdocs and faculty.

**Potential Rockefeller logos to be unveiled.** A process to overhaul the way in which Rockefeller's identity is represented in print and online has reached the public review phase. Beginning next week, a campuswide survey will ask members of the community for feedback on five logo options under consideration. The online survey will be announced by e-mail in the coming days. All five options can be seen on posters in the lobbies of Founder's Hall and Weiss Research Building.

**Transportation information to be available in the event of a transit strike.** A Web page will be established to assist Rockefeller University employees whose commuting plans would be affected by a transit worker's strike, should one occur. Human Resources will update the page, [www.rockefeller.edu/cgi-bin/rucommute.cgi](http://www.rockefeller.edu/cgi-bin/rucommute.cgi), with information about parking, car-pooling, road restrictions and other information if transit workers who operate subways and buses at the Metropolitan Transit Authority strike following the expiration of their contract on December 15.

**Happy holidays!** The university will be closed December 26 through January 2.

## ADMINISTRATION

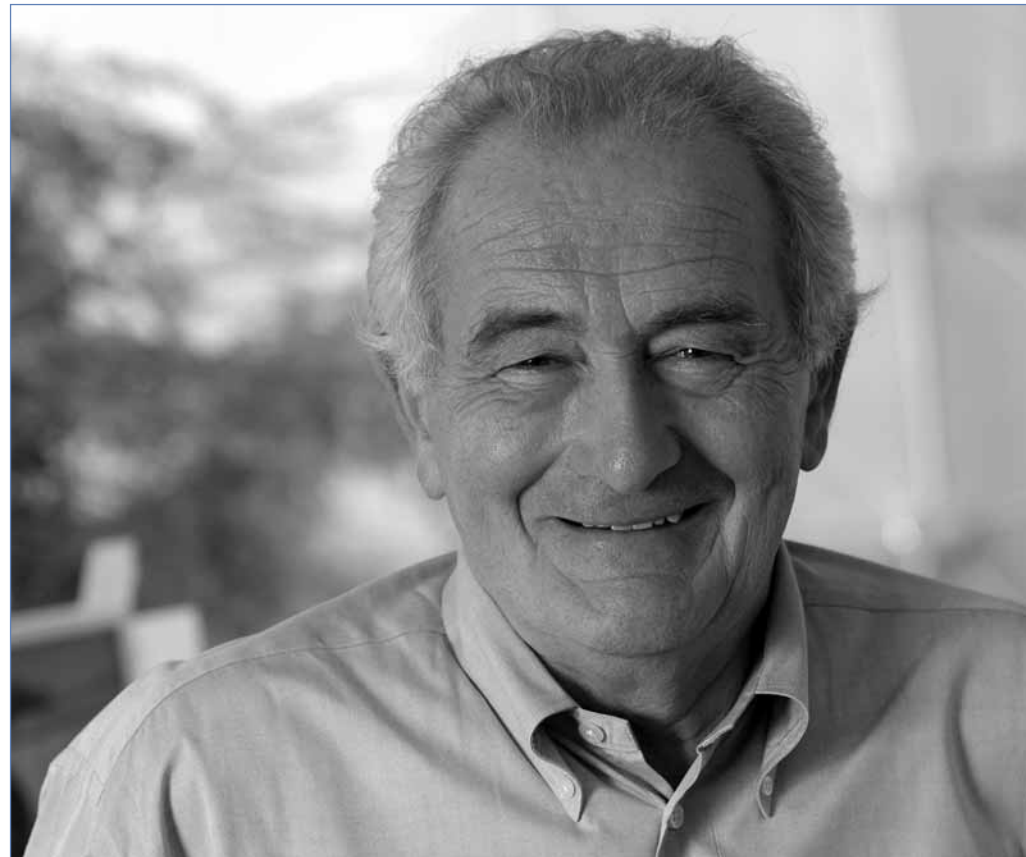
# John Tooze takes on oversight for scientific, facility operations

BY ZACH VEILLEUX

Paul Nurse has known Rockefeller University's new vice president for scientific and facility operations, John Tooze, for over 20 years. But it was another Brit, painter George Chapman, who ultimately convinced Dr. Tooze to cross the Atlantic and join Rockefeller.

Mr. Chapman, who, it should be noted, has been dead since 1993, is the artist responsible for a painting of a Welsh landscape that Dr. Tooze had seen several times in a London shop, and had long admired. Coincidentally, an engraving of that same painting, an original that is part of the university's art collection, hung in room 309 of Abby Aldrich Rockefeller Hall, the guest room that Dr. Tooze stayed in during one of his early visits to Rockefeller as a consultant.

"My wife and I stayed in that room and we saw the engraving and realized that maybe there's a connection here that I shouldn't ignore," Dr. Tooze says. "So I went back and bought the painting in London. And when I started at Rockefeller I had the engraving moved into my office."



On November 1, Dr. Tooze, a scientist and administrator whose career began in Jim Watson's laboratory and has included stints in scientific publishing and as executive director of the European Molecular Biology Organization in Germany, assumed oversight for much of the university's infrastructure, taking over many responsibilities.

continued on page 2

THE ROCKEFELLER UNIVERSITY  
Science for the benefit of humankind

### NewsWire

Home | University Quick Links | Printer-Friendly Version

October 6, 2005 | grants and gifts  
**Rockefeller researchers receive \$10 million grant to study how molecules interact within cells**  
The National Center for Research Resources at the National Institutes of Health announced this week that Rockefeller's Michael P. Rout will be a recipient of a five-year, \$10 million grant to study how molecules interact with one another within and between cells.

October 17, 2005 | science news  
**Specialized 'GPCR' proteins are the key to protecting the fly brain**  
New research from Rockefeller University shows that a class of molecules called G-protein coupled receptors (GPCRs) is essential for healthy glial cells, brain cells which support, nourish and protect neurons.

October 5, 2005 | science news  
**Alternative to cloning technique does not yield pure clones, Rockefeller scientists report**  
According to new research from Rockefeller University's Peter Mombaerts, creating mice by a two-step transfer of DNA does not reliably produce animals that are genetic duplicates of an original, and in some cases even creates "cloned" mice of the wrong sex.

October 4, 2005 | science news  
**For sex to happen, the right receptors must align**  
By studying single neurons from the hypothalamus of the brain, Rockefeller scientists are beginning to show how the same hormone receptors can impact sexual behavior differently in male and female rats. The findings suggest that when it comes to controlling behavior, the brain's genetic network can be extremely complicated.

October 21, 2005 | meetings and events  
**Scientists warn nuclear catastrophe is 'an imminent danger'**  
Rockefeller's Joshua Lederberg joins former defense secretary William Perry to urge that more attention be given to the threat of a terrorist-sponsored nuclear attack.

October 17, 2005  
**Lederberg says send flu shots to Asia**  
With concern over a global flu pandemic heightening, virologists have suggested giving the flu vaccine to Asian poultry workers, even if it means some westerners will have to go without. Among those who endorsed the idea in The International Herald Tribune are Rockefeller's Joshua Lederberg, who noted that in 1957 Hong Kong officials had to kill millions of infected birds to head off the virus.

October 6, 2005  
**Conquering parasites**  
This summer, researchers published the genome sequence for the parasites that cause Chagas' disease, African sleeping sickness and leishmaniasis, which collectively kill 125,000 people every year. *Scientific American* covered the discovery in its October issue, and Rockefeller's George Cross weighed in on its importance to the development of new therapies with fewer side effects. "The parasites are so different from humans that there would be no problem identifying drug targets," Cross says.

October 3, 2005  
**Paul Nurse on David Baltimore**  
Not only has David Baltimore's presidency at

## Communications office launches online NewsWire

For years, Rockefeller has relied on the 1200 word news release. When something newsworthy happened — a major discovery, a big award, a new president — writers in the Office of Communications and Public Affairs would create a news release designed to provide reporters with the basic information and background they need to produce their stories.

The method was fine for big events, but hundreds of smaller stories each year went uncovered. Many publications, even those that made the cover of high-impact journals such as *Nature* often went unnoticed by science reporters, and news releases trumpeting them would wind up banished to the "for journalists" section of the university's Web site.

Beginning in September, and working from a strategic commu-

continued on page 3



**Paul Nurse**, President  
**Joseph Bonner**, Director of Communications  
**Editor:** Zach Veilleux  
**Art Director:** John Haubrich

BenchMarks is published monthly and is distributed on the campus of the Rockefeller University. It is produced by the Office of Communications and Public Affairs. The Rockefeller University is an affirmative action/equal employment opportunity employer. ©2005 The Rockefeller University

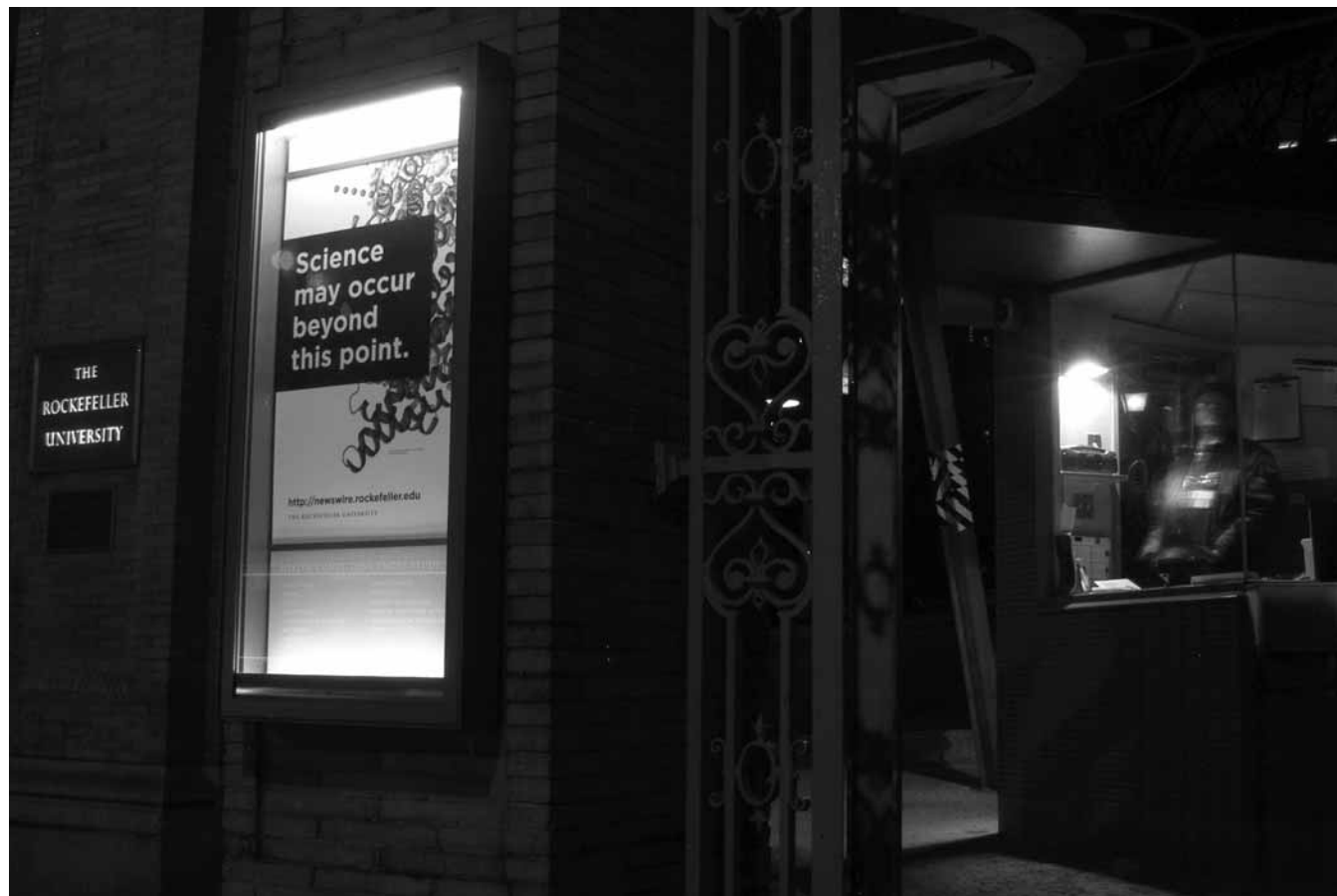
## Newsire continued

nications plan developed earlier in the year, Communications and Public Affairs has been using a new information dissemination model that offers Rockefeller- and science-attentive members of the public a direct line to Rockefeller news. The centerpiece of the plan, the Newsire Web site, launched on September 9.

"The new model allows us to act as a news bureau in much the same way as the Associated Press, though on a smaller scale. Our staff writers act as reporters, gathering information from the university, writing lay-friendly news stories and distributing them both to media outlets and directly to the public," says Zach Veilleux, executive editor in Communications and Public Affairs. "We can cover dozens of stories each month and they can be seen by anybody who visits our Home page." Because writers are producing shorter, more succinct stories, they can work on tighter deadlines and produce a greater volume of stories.

"By adding stories at the rate of several a week, we're portraying Rockefeller as a vibrant scientific campus where a great volume of science occurs," Mr. Veilleux says.

The Newsire site, [newswire.rockefeller.edu](http://newswire.rockefeller.edu), contains news of scientific discoveries, awards and prizes, grants and gifts, and administrative appointments and announcements. It is updated with new stories — as well as images and occasionally sound clips and video — by communications and pub-



**Promoting Newsire.** A series of new posters, to be displayed in the lighted case at Rockefeller's main gate, is one phase of a campaign to advertise the Newsire site both within the university community and externally.

lic affairs staff on an as-needed basis. In addition, the top three Newsire stories are published to the university's home page, and all stories will soon be available by RSS or

e-mail subscription.

An advertising campaign is under way to promote the new site both within the university community and externally. The

first phase of this campaign, a series of eye-catching posters on the university's front gate at 66th Street, began in November.

## Joe Bonner becomes head of Communications office

Joe Bonner, a science writer who has twice served as acting head of the Office of Communications and Public Affairs, was named the office's director on October 1. He takes over from Cathy Yarbrough, who left the university in January to take a similar position at The Salk Institute in La Jolla, California.

A native of Pennsylvania, Mr. Bonner joined Rockefeller in 1994 as an assistant editor, where he worked primarily on the university's internal and external newsletter, then called *News&Notes*. He became director of communications in 1998, and assumed oversight of the university's media relations function. As director of com-

munications and public affairs, he oversees media relations as well as other external communications, internal communications, and special events. He supervises a staff of 14.

Mr. Bonner is active in the science writing community. A member of the National Association of Science Writers, he has participated in workshops organized by the association, most recently in October as a member of a panel on electronic newsletters held at the 2005 Science-in-Society meeting. He also is a member of the board of Science Writers in New York, the NASW's local affiliate.

As acting head of CPA, Mr. Bonner, 42, led an effort earlier this year to draft a new strategic plan for the office that identifies specific target audiences and outlines strategies for reaching them using printed and interactive communications and public events.

"I appreciate the support that Paul Nurse and Fred Bohen have given our office over the last year, and I look forward to working closely with the President as we implement our strategic plan," Mr. Bonner says. "Our goal is to paint a broad picture of the activities that go on at Rockefeller and develop more efficient ways to convey that picture beyond our campus."

## John Tooze continued

ities previously handled by Fred Bohen, the university's executive vice president, who retired on October 31.

Dr. Tooze's responsibilities include the oversight of much of the university's administration, including Plant Operations, Planning and Construction, Housing, Research Support, Information Technology, the Laboratory Animal Research Center, Security, Technology Transfer and The Rockefeller University Press. The heads of these departments, who previously reported to Mr. Bohen, will now report to Dr. Tooze. The executive vice president position will not be filled and the remaining areas formerly under Mr. Bohen's oversight, including Finance, General Counsel's Office, Development, Human Resources and Communications and Public Affairs, will report directly to the president.

Dr. Tooze received his Ph.D. in biophysics from the University of London in 1965 and spent two years as a postdoc in Jim Watson's laboratory at Harvard University. He worked for the journal *Nature* for several years in the late 1960s, first as a weekly correspondent and later as assistant and then deputy editor. After a short stint as a research administrator at the Imperial Cancer Research Fund, Dr. Tooze

accepted the position of executive director of the European Molecular Biology Organization in Heidelberg, Germany, and later, scientific coordinator at the European Molecular Biology Laboratories, a related organization.

In 1994, Dr. Tooze returned to London and to the Imperial Cancer Research Fund, which later became Cancer Research UK, as director of support services.

"My position at the ICRF was very similar to the role I'm taking on at Rockefeller," Dr. Tooze says. "I oversaw 18 scientific resource centers and was responsible for their maintenance and building projects as well as utilities, health and safety, the library, information services and procurement."

Since early last year, Dr. Tooze has been serving as a consultant to the university, and has been a frequent presence on campus. His recommendations have already led to a number of changes to the university's operations, including the closure of the DNA Sequencing Resource Center, the establishment of a scientific advisory committee for the resource centers, and combining the gene array and genotyping resource centers into the new Genomics Resource Center.

After the search for an executive vice president failed to yield an appropriate can-

didate, Dr. Nurse decided to split the role into two positions, and he recruited Dr. Tooze to take over scientific and facility management. "During his time as a consultant, John met with a number of faculty and staff members, as well as trustees and other members of the community, and he has been well-liked and extremely helpful," says Dr. Nurse.

"I see my role as taking responsibility for certain areas of the university, and running them on a day to day basis, in order allow Paul to focus on other tasks," says Dr. Tooze. "I've inherited a strong group of leaders and my job is to support them and ensure they are making the best use of the university's resources in order to support our science."

At the top of his list is managing the evolution of the university's program for centralized scientific resource centers. "I'm a firm believer in resource centers," Dr. Tooze says. "With some exceptions, we should avoid setting up resources inside individual labs that could be provided centrally. And we should consider outsourcing some services altogether when we can get more value without losing intellectual input. As specific technologies evolve from small-scale bench procedures to large-scale manufacturing operations, we have to reevaluate how to provide them most efficiently."

Similar challenges exist for Information Technology, the Library, and RU Press.

"These are all areas which are being heavily affected by rapidly evolving technology and we need to be asking how we can get the maximum benefit from them as we go forward," says Dr. Tooze. In the case of LARC, the university needs to predict how much demand for this resource will grow in the coming years, Dr. Tooze says, and determine how to best meet the demand in a way that is fair both to labs that use animals and labs that do not.

"There is a lot to think about in terms of meeting the university's needs for these shared facilities and managing their delivery, and John brings a great deal of wisdom, energy and experience to this important area," Dr. Nurse says.

Dr. Tooze will also play a significant role in guiding the development of plans to build new laboratory space on the north end of campus. "John has been involved in several large-scale building projects in his former positions, including a 140,000 square foot laboratory building at Cambridge for Cancer Research UK," says Dr. Nurse. "His familiarity with the challenges involved in this type of project will be extremely valuable as we move forward with our new building."

# milestones continued

**Christopher Ilch**, laboratory manager, Vosshall Laboratory.

**Jason James**, research assistant, Heintz Laboratory.

**Hao Jiang**, postdoctoral fellow, Roeder Laboratory.

**Melanie Johncilla**, research assistant, Kreek Laboratory.

**Carolyn Johnson**, research assistant, Pfaff Laboratory.

**Sachin Kadam**, environmental assistant, Laboratory Safety and Environmental Health.

**Laraine Karl**, marketing associate, Rockefeller University Press.

**Anshuman Kelkar**, postdoctoral associate, Steller Laboratory.

**Alexander Kelly**, postdoctoral fellow, Funabiki Laboratory.

**Patrick Kendall**, porter, Housing Faculty House.

**Alla Kleynier**, teacher, Child and Family Center.

**Thomas Landers**, research specialist, Auerbach Laboratory.

**Lance Langston**, postdoctoral associate, O'Donnell Laboratory.

**Sang-gyu Lee**, postdoctoral associate, O'Donnell Laboratory.

**Martin Leidner**, IT project & business process manager, Information Technology.

**Maria Lemos**, postdoctoral fellow, McKinney Laboratory.

**Jia Li**, postdoctoral fellow, Roeder Laboratory.

**Cindy Lim**, research assistant, Tuschl Laboratory.

**Angie Lin**, research assistant, Greengard Laboratory.

**Carolina Lin**, research assistant, Tuschl Laboratory.

**Jenny Liu**, research assistant, Kapoor Laboratory.

**Andrea Low**, instructor in clinical investigation, Ho Laboratory.

**Lu A Lu**, research support assistant, Transgenic Services.

**Jan Lunemann**, postdoctoral fellow, Münz Laboratory.

**Charles Patrick Lusk**, postdoctoral associate, Blobel Laboratory.

**Yingli Ma**, postdoctoral associate, Blobel Laboratory.

**Erica Machlin**, research assistant, Rice Laboratory.

**Suzanne Magnotta**, director of bionutrition, Hospital Bionutrition.

**Rajani Maiya**, postdoctoral associate, Strickland Laboratory.

**Anitha Male**, research assistant, R. Darnell Laboratory.

**Marek Mandau**, research assistant, Kreek Laboratory.

**Elyana Matayeva**, research assistant, Steinman Laboratory.

**Jennifer Mehren**, postdoctoral fellow, Vosshall Laboratory.

**Pablo Meyer Rojas**, postdoctoral associate, Young, M. Laboratory.

**Ariana Miguelez**, research assistant, Ravetch Laboratory.

**Marlon Miller**, administrative assistant, LARC.

**Kelly Molloy**, research assistant, Chait Laboratory.

**Eugene Mortison**, research assistant, Fuchs Laboratory.

**Takao Nakagawa**, postdoctoral associate, Vosshall Laboratory.

**Roslyn Nedd**, office administrator, Information Technology.

**Mario Niepel**, postdoctoral associate, Rout Laboratory.

**Shauna O'Garro**, copy editor, JEM, Rockefeller University Press.

**Kimberly O'Hara**, research assistant, Kreek Laboratory.

**Nicolette Oling**, research assistant, Stoffel Laboratory.

**Albrecht Ott**, visiting professor, Libchaber Laboratory.

**Vernette Owens**, IRB administrator, Hospital Institutional Review Board.

**Sudeep Sree Parambath Sreedharan**, financials applications developer, Information Technology.

**Sungcho Park**, research assistant, Steinman Laboratory.

**Paul Pelavin**, visiting fellow, Stoffel Laboratory.

**Lucine Petit**, research assistant, Steinman Laboratory.

**Sivarama Pokala**, postdoctoral associate, Bargmann Laboratory.

**Lisa Pomeranz**, research associate, Friedman Laboratory.

**Brian Pridgen**, research assistant, Breslow Laboratory.

**Dmitriy Pritykin**, purchasing assistant, LARC.

**Richard H Rafferty**, receiving clerk, Purchasing.

**Teresa Ramirez-Montagut**, postdoctoral fellow, R. Darnell Laboratory.

**Brenda Ray**, clinical research nurse practitioner, Kreek Laboratory.

**Melania Reyes**, laboratory technician, Rice Laboratory.

**Ana Ribeiro**, postdoctoral associate, Pfaff Laboratory.

**Kimberly Ritola**, postdoctoral associate, Rice Laboratory.

**Deborah Rivera**, animal health technician I, LARC.

**Olivier Rivoire**, postdoctoral associate, Leibler Laboratory.

**Davide F. Robbiani**, research associate, Nussenzweig Laboratory.

**Mary Robbins**, archival assistant, Archive Center.

**Rodrigo Rodriguez**, animal attendant, LARC.

**Elizabeth Romero**, teacher, Child and Family Center.

**Morgane Rouault**, postdoctoral associate, Kreek Laboratory.

**Zofia Rozmus**, teachers aide, Child and Family Center.

**Kelly Ruggles**, research assistant, Chait Laboratory.

**Asha Sarma**, research assistant, Young Laboratory.

**David Schoichet**, administrative assistant, Rockefeller University Press.

**Shuangping Shi**, postdoctoral associate, Stoffel Laboratory.

**Jose Pablo Silva**, postdoctoral associate, Stoffel Laboratory.

**Caitlin Smith**, research assistant, Kreek Laboratory.

**Jennifer Smith-Ohayon**, postdoctoral associate, Gotschlich Laboratory.

**Nina Soares**, research assistant, Funabiki Laboratory.

**Gretel Sosa**, senior events planner, external events, Communications and Public Affairs.

**Nicholas Stavropoulos**, postdoctoral fellow, Young, M. Laboratory.

**Cordelia Stearns**, research assistant, Greengard Laboratory.

**Molly Stehn**, assistant to occupational health service, Occupational Health Services.

**Daniel Stettler**, visiting fellow, Gilbert Laboratory.

**Heribert Stoiber**, visiting scientist, Steinman Laboratory.

**Susan Strider**, laboratory administrator, Pfaff Laboratory.

**Amos Tanay**, fellow in physics and biology, Theoretical Studies Laboratory.

**Wei Tang**, laboratory technician, Mombaerts Laboratory.

**John Tooze**, vice president, Scientific and Facility Operations.

**Su-Yi Tsai**, research assistant, Blobel Laboratory.

**Morgan Varona**, animal technician, Fuchs Laboratory.

**HaeNa Waechter**, research assistant, Steinman Laboratory.

**Leslie Walker**, copy editor, JCB, Rockefeller University Press.

**Xiujie Wang**, visiting fellow, Chua Laboratory.

**Etsuko Watanabe**, postdoctoral fellow, Chua Laboratory.

**Karen Wei**, research assistant, Rout Laboratory.

**Jenny Wong**, development assistant, Development.

**Hui-Bing Katie Wu**, postdoctoral fellow, Pfaff Laboratory.

**Jun-Yi Yang**, postdoctoral fellow, Chua Laboratory.

**Shu Ying (Annie) Yang**, analyst, Investments.

**Nicholas Yannoutsos**, member of the adjunct faculty, Nussenzweig Laboratory.

**Kai hui Yao**, research assistant, Nussenzweig Laboratory.

**Huaxu Yu**, postdoctoral associate, Strickland Laboratory.

**LiLi Zhang**, administrative assistant, Rice Laboratory.

**Qiuyu Zhang**, research assistant, Pfaff Laboratory.

**Ido Zuri**, postdoctoral fellow, Mombaerts Laboratory.

This publication lists new hires, retirements, awards and promotions. Staff promotions are listed yearly in September; academic promotions and appointments are listed monthly. Please send notices of awards to zach.veilleux@rockefeller.edu or to Box 68.

## Obituaries:

**William O. Baker**, chairman emeritus of The Rockefeller University Board of Trustees, passed away October 31 in Chatham, New Jersey, at the age of 90. The news of his death was released by Bell Labs, the firm with which Bill Baker's name was virtually synonymous.

Mr. Baker became a Trustee in 1960 and served as chairman of the Board during Josh Lederberg's presidency, from 1980 to 1990. In 1990, he became chairman emeritus and remained active with the university. In the 1990s, Mr. Baker was enormously helpful to Torsten Wiesel and Mitch Feigenbaum in setting up the Center for Studies in Physics and Biology. He was awarded an honorary degree by the university in 1990 and received the David Rockefeller Award for Extraordinary Service in 1997.

An international leader in science and technology, Mr. Baker joined Bell Labs in 1939. As director of research and later president, he oversaw the development of technologies that have become commonplace in daily life, including synthetic quartz crystals, solar cells, laser photonics and cellular telephones. His appointment to the White House's Foreign Intelligence Advisory Board by President Eisenhower in 1956 was renewed by Presidents Kennedy, Johnson, Nixon, Ford, Reagan and Bush. His numerous awards and honors included the National Medal of Science, the President's National Security Medal, the Thomas Alva Edison Medal for Science, and more than 25 honorary degrees. He was a member of the National Academy of Sciences, the National Academy of Engineering, and the Institute of Medicine.

## Margaret Hamburg elected to Board of Trustees



Rockefeller University's Trustees have elected Margaret Hamburg, M.D., a former New York City Health Commissioner, Assistant Secretary of Health and Human Services and one of the youngest people ever elected to the prestigious Institute of Medicine, to serve on the university's Board.

"Peggy Hamburg is one of the country's leading advocates for better public health policies and infrastructure at the local, national and global level, and she has a firsthand understanding of the importance of basic science to improving public health. We are fortunate to have the benefit of her wisdom and experience," says Paul Nurse, the university's president.

Dr. Hamburg, whose election to the Board was announced following its meeting on November 16, is currently senior scientist at the Nuclear Threat Initiative, a foundation dedicated to reducing the threat to public safety from nuclear, chemical and biological weapons. A graduate of Radcliffe College and Harvard Medical School, she worked briefly at Rockefeller University in the mid-1980s, and has held positions at the National Institutes of Health, Columbia University School of Public Health, Cornell University Medical College and the U.S. Department of Health and Human Services.

Dr. Hamburg is the daughter of David Hamburg, a world-renowned physician and himself a trustee emeritus of The Rockefeller University, and Beatrix Hamburg, who was the first African-American woman to be admitted to Vassar College and to earn a degree from the Yale University School of Medicine.

# milestones

## PROMOTIONS, AWARDS AND PERSONNEL NEWS

### Awarded:



**Bruce McEwen**, the Goldman-Rakic Prize for Cognitive Neuroscience from the National Alliance for Research on Schizophrenia and Depression, the world's largest donor-supported philanthropy devoted to the support of research on brain and behavioral disorders. Dr. McEwen is recognized for his studies on environmentally regulated gene expression in the brain, which has contributed to an understanding of stress and stress hormones in a range of disorders, including depression and post-traumatic stress. The Goldman-Rakic prize, which was presented to Dr. McEwen on October 28 during a gala awards dinner in New York City, honors excellence in neurobiological research at the cellular, physiological or behavioral levels that may lead to a greater understanding of the cerebral cortex. Dr. McEwen is the Alfred E. Mirsky Professor and head of the Margaret Milliken Hatch Laboratory of Neuroendocrinology.

**Bruce McEwen**, the Karl Spencer Lashley Award from the American Philosophical Society, in recognition of work on the integrative neuroscience of behavior. The award was presented on November 11.

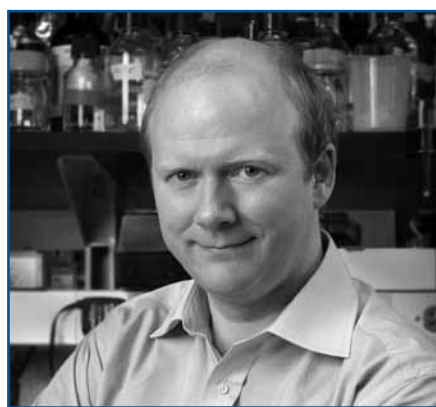
**Torsten Wiesel**, the Institute of Medicine's David Rall Medal, which is awarded annually to an IOM member who has demonstrated particularly distinguished leadership as chair of a study committee or other activity, showing commitment above and beyond the usual responsibilities of the position. Dr. Wiesel was chair, from 1994 to 2004, of the Committee on Human Rights of the National Academy of Sciences, National Academy of Engineering, and Institute of Medicine. Dr. Wiesel was president of Rockefeller University from 1992 to 1998 and is the Vincent and Brooke Astor Professor Emeritus.



**Titia de Lange**, the National Institutes of Health Director's Pioneer Award, which provides for up to \$500,000 in direct costs per year for five years. The Pioneer Award recognizes scientists who are taking innovative approaches to address major areas in biomedical research. The award, which is in its second year, provides support for groundbreaking, high-risk research that, if successful, will have a significant impact. Dr. de Lange, who is Leon Hess Professor and head of the Laboratory of Cell Biology and Genetics, is one of 13 recipients.

**Joshua Lederberg**, the 2006 Irving Wright Award of Distinction of the American Federation for Aging Research, which honors individuals who have made exceptional contributions to basic or clinical research in the field of aging. The award will be presented at a dinner on May 15, 2006 at the Essex House in Manhattan. Dr. Lederberg is a former president of The Rockefeller University and professor emeritus.

**Attallah Kappas**, a civic and academic honor from the University of Catania, Sicily, for his development of an inhibitor of bilirubin production which prevents occurrence of severe jaundice in newborns. A genetic defect that causes jaundice is common in Italy and other Mediterranean countries and conveys a serious risk of bilirubin-induced central nervous system damage. Dr. Kappas is professor emeritus and head of the Laboratory of Pharmacology.



**Michael P. Rout**, a \$10 million grant from the National Center for Research Resources at the National Institutes of Health. The funds will go to establish a National Center for Networks and Pathways, based at Rockefeller, which will develop new tools to investigate the interaction between proteins within and between cells. Collaborators are Rockefeller's Brian Chait, Andrej Sali, from the University of California at San Francisco, and John Aitchison, from the Institute for Systems Biology in Seattle. Dr. Rout is head of the Laboratory of Cellular and Structural Biology.

**Tom W. Muir**, the 2005 Irving Sigal Young Investigator Award. Sponsored by Merck Research Laboratories, the Sigal Young Investigator Award recognizes a significant contribution to the study of proteins by a scientist younger than 40. Dr. Muir is head of the Selma and Lawrence Ruben Laboratory of Synthetic Protein Chemistry.

**Nicolas E. Buchler** and **Edo L. Kussell**, 2006 Career Awards at the Scientific Interface from the Burroughs Wellcome Fund. Dr. Buchler and Dr. Kussell each will receive \$500,000 to foster their development and productivity early in their careers and help them make the critical transition to becoming independent investigators. CASI awards are designed to encourage research at the interface between the physical/computational sciences and the biological sciences and to recognize the vital role cross-trained scientists play in furthering biomedical research. Dr. Buchler and Dr. Kussell were among ten recipients of the award nationally. Dr. Buchler is a postdoc in the Feigenbaum lab; Dr. Kussell is a postdoc in the Leibler lab.

### Named:

**Jeffrey Friedman**, to the Institute of Medicine. Collectively, the members of the IOM serve as an independent scientific advisor to the federal government on health matters, and election to the IOM recognizes those who have made major contributions to the advancement of the medical sciences, health care, and public health, and is considered one of the highest honors in those fields. Dr. Friedman is Marilyn M. Simpson Professor and head of the Laboratory of Molecular Genetics. He also directs the Starr Center for Human Genetics at Rockefeller.



**Michel C. Nussenzweig**, chairperson of the Cellular and Molecular Immunology Study Section at the Center for Scientific Review of

the National Institutes of Health. Dr. Nussenzweig will lead the committee, which reviews grant applications in the field of immunology, for the term ending June 30, 2006. Dr. Nussenzweig is Sherman Fairchild Professor and head of the Laboratory of Molecular Immunology.

**Silvia Puma**, **Jonathan Sellon** and **David Clain**, semifinalists in the Siemens-Westinghouse Competition in Math, Science and Technology. The competition, which recognizes outstanding teenagers based on science research projects they complete in high school, awards \$1 million in college scholarships each year. Ms. Puma, Mr. Sellon and Mr. Clain were all participants in Rockefeller University's Outreach Program, which places high school students in Rockefeller laboratories.



### Published:

*René Dubos, Friend of the Good Earth: Microbiologist, Medical Scientist, Environmentalist*, a biography of the influential Rockefeller scientist and Pulitzer Prize winning author, written by **Carol L. Moberg**. Dr. Dubos, who coined the popular motto "Think Globally, Act Locally," spent nearly his entire scientific career at Rockefeller University. He was known for his 1939 discovery of the first antibiotics (tyrothricin and gramicidin) as well as for his passionate beliefs about antibiotic resistance, environmental health and over-reliance on vaccines and drugs to eradicate disease. Dr. Moberg, who worked with Dr. Dubos in the 1970s, is a senior research associate in Ralph Steinman's laboratory.

*Brain Arousal and Information Theory: Neural and Genetic Mechanisms*, by **Donald Pfaff**. Employing the framework of information theory, the book outlines our understanding of arousal systems in the brain and argues that beneath mental functions and emotional dispositions, a primitive neuronal system governs arousal. The book is published by Harvard University Press; Dr. Pfaff is head of the Laboratory of Neurobiology and Behavior.

### Promoted (academic appointments):

**Mila Jankovic**, from research associate to senior research associate, Nussenzweig Lab.

**Thomas McAvoy**, from postdoctoral associate to research associate, Greengard Lab.

**Jerry Melchor**, from postdoctoral fellow to research associate, Strickland Lab.

**Martin Mense**, from postdoctoral associate to research associate, Gadsby Lab.

**Bogdan Morariu**, from postdoctoral associate to research associate, Khuri Lab.

**Paola Vergani**, from research associate to research assistant professor, Gadsby Lab.

**Alin Vonica**, from postdoctoral fellow to research associate, Brivanlou Lab.

**Gwendolyn E. Wood**, from postdoctoral fellow to research associate, McEwen Lab.

**Xin Yu**, from postdoctoral fellow to research associate, Roeder Lab.

### Hired: (June to November 2005)

**Nancy Adgent**, electronic records archivist, Archive Center.

**Frida Arrey**, research assistant, Münz Laboratory.

**Jennifer Ashlock**, university print production coordinator, Communications and Public Affairs.

**Maya Bar-Dagan**, research assistant, Muir Laboratory.

**Eliza Bhatt**, data entry assistant, Finance Controllers Office.

**Erik Bloss**, research assistant, McEwen Laboratory.

**Robert Blue**, research assistant, Collier Laboratory.

**Roosevelt Boursiquot**, research intern, Simon Laboratory.

**Anthony Bryant**, mechanic 1, Plant Operations Maintenance Shop.

**Mihaela Butila**, data entry assistant, Purchasing.

**Lizette Cast**, administrative assistant, Leibler Laboratory.

**Pauline Chan**, teacher, Child and Family Center.

**Champak Chatterjee**, postdoctoral associate, Muir Laboratory.

**Kwan Yuan Chen**, research assistant, Breslow Laboratory.

**Cheolho Cheong**, postdoctoral associate, Steinman Laboratory.

**Eleanor Clowney**, research assistant, Ravetch Laboratory.

**Jana Colley**, administrative assistant, Kreek Laboratory.

**Oliver Daltrop**, visiting fellow, Muir Laboratory.

**Olga Diaz-Pulido**, research assistant, R. Darnell Laboratory.

**Mathias Ditzen**, postdoctoral associate, Voshall Laboratory.

**Marc-Werner Dobenecker**, postdoctoral associate, Tarakhovsky Laboratory.

**Joseph Dougherty**, postdoctoral associate, Heintz Laboratory.

**Zhimei Du**, postdoctoral fellow, Roeder Laboratory.

**Judilyn Fuentes Duculan**, postdoctoral associate, Krueger Laboratory.

**Rajeswari Edayathumangalam**, postdoctoral associate, Darst Laboratory.

**Megan Elevado**, communications and public affairs assistant, Communications and Public Affairs.

**Elena Ezhkova**, postdoctoral associate, Fuchs Laboratory.

**Katalin Fejes Toth**, postdoctoral associate, Tuschl Laboratory.

**Adriana Flores-Langarica**, postdoctoral associate, Steinman Laboratory.

**Jason Fontenot**, research associate, Tarakhovsky Laboratory.

**Amanda Garcia-Williams**, research assistant, Karayiorgou Laboratory.

**Elvin Geng**, postdoctoral fellow, Ho Laboratory.

**Michelle Ryu Gleason**, postdoctoral associate, Hudspeth Laboratory.

**Juanita Godfrey**, animal attendant, Field Research Center.

**Shuba Gopal**, member of the adjunct faculty, G. Cross Laboratory.

**Allegra Grossman**, instructor in clinical investigation, Stoffel Laboratory.

**Attila Gulyas-Kovacs**, postdoctoral associate, Gadsby Laboratory.

**Maria Gustafsson**, postdoctoral fellow, Stoffel Laboratory.

**Emma Guttman-Yassky**, instructor in clinical investigation, Krueger Laboratory.

**Felicia Hall**, animal attendant, LARC.

**Matthew Hobson**, animal technician, Heintz Laboratory.

**Margret Hoehle**, member of the adjunct faculty, Ott Laboratory.

**Charlotte Hubbert**, postdoctoral associate, Fuchs Laboratory.